

3311 GENTRY DRIVE, WEST LAKE HILLS, 78746

SITE FEASIBILITY ANALYSIS

PERFORMED BY DAVIN FILLPOT, ARCHITECT / WLH CODE CONSULTANT

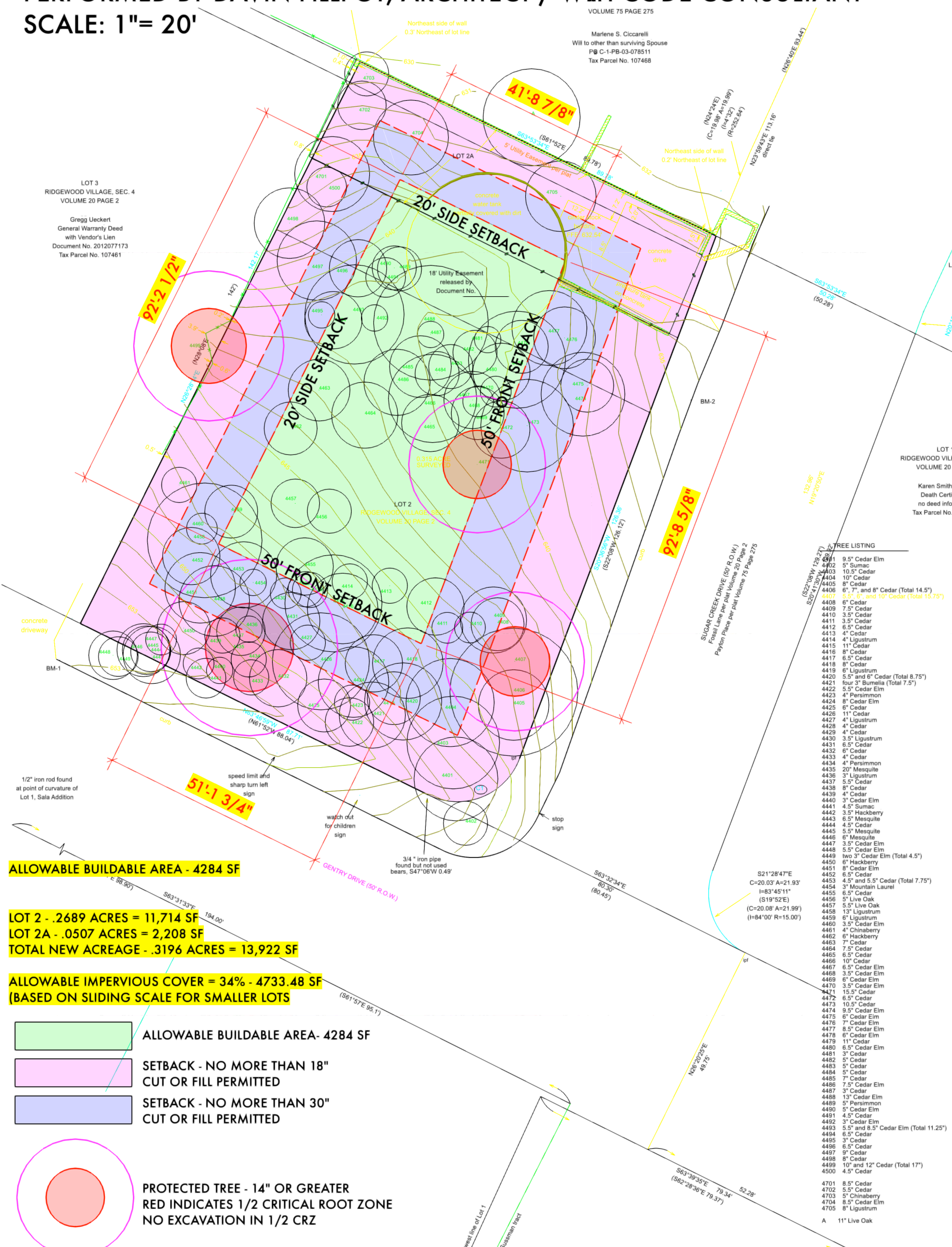
SCALE: 1" = 20'

VOLUME 75 PAGE 275

Marlene S. Ciccarelli
Will to other than surviving Spouse
P@ C-1-PB-03-078511
Tax Parcel No. 107468

LOT 3
RIDGEWOOD VILLAGE, SEC. 4
VOLUME 20 PAGE 2

Gregg Ueckert
General Warranty Deed
with Vendor's Lien
Document No. 2012077173
Tax Parcel No. 107461



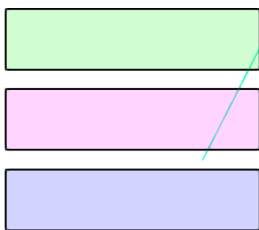
ALLOWABLE BUILDABLE AREA - 4284 SF

LOT 2 - .2689 ACRES = 11,714 SF

LOT 2A - .0507 ACRES = 2,208 SF

TOTAL NEW ACREAGE - .3196 ACRES = 13,922 SF

ALLOWABLE IMPERVIOUS COVER = 34% - 4733.48 SF
(BASED ON SLIDING SCALE FOR SMALLER LOTS)



ALLOWABLE BUILDABLE AREA- 4284 SF

SETBACK - NO MORE THAN 18"
CUT OR FILL PERMITTED

SETBACK - NO MORE THAN 30"
CUT OR FILL PERMITTED

PROTECTED TREE - 14" OR GREATER
RED INDICATES 1/2 CRITICAL ROOT ZONE
NO EXCAVATION IN 1/2 CRZ

EXTREMELY IMPACTFUL CHANGES TO THE BUILDING CODE ARE CURRENTLY BEING REVIEWED BY THE ZONING AND PLANNING COMMISSION AND CITY COUNCIL.

- SWIMMING POOLS THAT HAVE 6" OF FREEBOARD WILL NOT COUNT AGAINST IMPERVIOUS COVER

- DRIVEWAYS USING PERVIOUS CONCRETE, WITH DRAINAGE UNDERLAYMENT, WILL NOT COUNT AGAINST IMPERVIOUS COVER TOTAL

- THE SHADED AREAS OF REVISED CUT / FILL REQUIREMENTS SHOWN ON THE DIAGRAM REFLECT THE PROPOSED CHANGES AS WELL

TREE LISTING

4401	9.5" Cedar Elm
4402	5" Sumac
4403	10.5" Cedar
4404	10" Cedar
4405	8" Cedar
4406	6", 7", and 8" Cedar (Total 14.5")
4407	5.5", 6", and 10" Cedar (Total 15.75")
4408	6" Cedar
4409	7.5" Cedar
4410	3.5" Cedar
4411	3.5" Cedar
4412	6.5" Cedar
4413	4" Cedar
4414	4" Ligustrum
4415	11" Cedar
4416	8" Cedar
4417	6.5" Cedar
4418	8" Cedar
4419	6" Ligustrum
4420	5.5" and 6" Cedar (Total 8.75")
4421	four 3" Bumelia (Total 7.5")
4422	5.5" Cedar Elm
4423	4" Persimmon
4424	8" Cedar Elm
4425	6" Cedar
4426	11" Cedar
4427	4" Ligustrum
4428	4" Cedar
4429	4" Cedar
4430	3" Ligustrum
4431	6.5" Cedar
4432	6" Cedar
4433	4" Cedar
4434	4" Persimmon
4435	20" Mesquite
4436	3" Ligustrum
4437	5.5" Cedar
4438	8" Cedar
4439	4" Cedar
4440	3" Cedar Elm
4441	4.5" Sumac
4442	3.5" Hackberry
4443	6.5" Mesquite
4444	4.5" Cedar
4445	5.5" Mesquite
4446	6" Mesquite
4447	3.5" Cedar Elm
4448	5.5" Cedar Elm
4449	two 3" Cedar Elm (Total 4.5")
4450	6" Hackberry
4451	8" Cedar Elm
4452	6.5" Cedar
4453	4.5" and 5.5" Cedar (Total 7.75")
4454	3" Mountain Laurel
4455	6" Ligustrum
4456	3" Cedar Elm
4457	4" Chinaberry
4458	6" Hackberry
4459	7" Cedar
4460	3.5" Cedar
4461	4" Chinaberry
4462	6" Hackberry
4463	7" Cedar
4464	7.5" Cedar
4465	6.5" Cedar
4466	10" Cedar
4467	6.5" Cedar Elm
4468	3.5" Cedar Elm
4469	6" Cedar Elm
4470	3.5" Cedar Elm
4471	15.5" Cedar
4472	6.5" Cedar
4473	10.5" Cedar
4474	9.5" Cedar Elm
4475	6" Cedar Elm
4476	7" Cedar Elm
4477	8.5" Cedar Elm
4478	6" Cedar Elm
4479	11" Cedar
4480	6.5" Cedar Elm
4481	3" Cedar
4482	5" Cedar
4483	5" Cedar
4484	5" Cedar
4485	7" Cedar
4486	7.5" Cedar Elm
4487	3" Cedar
4488	13" Cedar Elm
4489	5" Persimmon
4490	5" Cedar Elm
4491	4.5" Cedar
4492	3" Cedar Elm
4493	5.5" and 8.5" Cedar Elm (Total 11.25")
4494	6.5" Cedar
4495	3" Cedar
4496	6.5" Cedar
4497	9" Cedar
4498	8" Cedar
4499	10" and 12" Cedar (Total 17")
4500	4.5" Cedar
4701	8.5" Cedar
4702	5.5" Cedar
4703	5" Chinaberry
4704	8.5" Cedar Elm
4705	8" Ligustrum
A	11" Live Oak

LOT 1
AMENDING PLAT OF
PRESCOTT ADDITION
Page 87